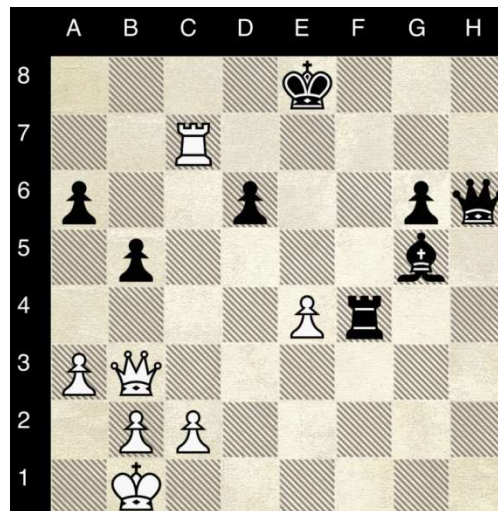


HKIS Chess Lessons 2023-2024 Term 1 For G3-6 Students

Mr. CHAU Sau Ming is to conduct 3-4pm class, who has been teaching chess at primary and middle schools for 10 years. Mr. Chau is a FIDE Instructor and a strong chess player in HK. He was a skeleton member of the HK team for the World Chess Olympiad, and he ranked number one with the highest FIDE rating for some years before he retired from the HK team in 2006. He did on several occasions accompany and serve as a coach to junior players in some international tournaments. Also, he is a founding member of the HK Juniors Chess Club, and has been serving as a committee member since then, helping the Club to promote chess for the juniors in HK.



White moves, mate in 3
1. Qe6+ Kf8 2. Qc8+ Bd8 3. Qxd8#

Date: Wednesday, 16 Sessions,
Sep: 6, 13, 20, 27, Oct: 11, 25,
Nov: 1, 8, 22, 29, Dec: 6,
Jan: 10, 17, 24, 31, Feb: 7,
Time: 3 - 4pm for G3-5 students
4 - 5pm for G3-6 students
Location: 137A, CAN, LP campus
Suitability: Players of all levels
Fee: \$3020 (Note: full fee is charged irrespective of how many lessons one may miss.)
Equipment: Chess set: \$100,
Chess Clock: \$100
(All optional, only if you wish to buy one)
The fees include two HKIS Chess Tournaments, details will be sent to you in September by email.

All students can participate in ASAs regardless of vaccination status, as per the new EDB guidelines. Please continue to adhere to the Covid Protocols. If a household member is testing positive for Covid, please take responsibility to have a negative test result before coming to campus. Please [HKIS Central website](https://www.hkis.edu.hk/) check out the HKIS Central website, where the most updated information is shared with the HKIS community.

Mr. CHAU Sau Ming will be teaching for the 3-4pm class, and Ms. HO Yin Ping will be teaching the 4-5pm class.

Sign-up: Register online: www.hoyinpingchess.com, click Chess Lesson Details.

Payment: By bank transfer - please transfer to HSBC account "HOYINPINGCHESS", account no. 801 571498 838 (conventional cheque is not accepted). By FPS, account "hoyinpingchess@gmail.com". Please send your bank transfer receipt by email to Ms. HO Yin Ping at hoyinpingchess@gmail.com

Contact: Ms. HO Yin Ping, FIDE Chess Master and FIDE Chess Instructor (FIDE=World Chess Federation)
Phone: 9215 2682 Email: hoyinpingchess@gmail.com Website: www.hoyinpingchess.com



HO Yin Ping – Introduction

She is a FIDE Chess Master and FIDE Chess Instructor. She represented Hong Kong in the World Women Chess Championships (Asian Zone) and World Chess Olympiads from 1984 to 2005. In the past 25 years, she spent most of her time in developing junior chess in HK. She is also the Chief Organizer of HK Junior Championship, HK Inter-School Championship. In the past, she occasionally took young chess players to Children Chess Olympiad. Thousands of students at international primary schools benefitted from her over 25 years of teaching experience. Most of her students played for school chess team, and several became junior champions in Hong Kong.

Learn: Back Rank Mate, Magnificent 7th Rank, Mate the Fleeing King, Diagonal Mate with Queen and Bishop, Mate with Knight and Queen against the Fianchetto Position. Know the basic chess rules, simple strategy & tactics, Opening, Middle Game and End Game.

Aim of this Chess course is to experience: (1) Out of the box thinking, (2) Creativity, (3) SWOT assess strengths and weakness, opportunities and threats, (4) Concentration depths, (5) Checkmate focus, (6) Sportsmanship as an essential component to develop growing minds, whether a game is won, lost, or draw.

Mind sport: Every chess master was once a beginner. Outrageous chess moves and unexpected tactics decide who is the winner. Try to play a beautiful game worthy of a brilliancy prize. Chess is a mind sport that is played by millions of people worldwide. One doesn't have to play well, it's enough to play better than your opponent.

LESSONS are open to students of all levels including beginners, intermediate, advanced, and students who participate in open tournaments.

Benefits to students: (1) Logical thinking is strengthened. (2) Analyse and visualize in a deeper way. (3) Develop a mind that thinks in terms of strategy and tactics. (4) Speed of thinking is increased. (5) Winning is important but good sportsmanship is vital to character development.

Tournament opportunities

Student can participate in local tournaments. Ms HO is Chairman and Tournament Director of the Hong Kong Juniors Chess Club (www.hkjuniorchess.org), which organizes 3 junior events each year. Students who want to play in International Tournaments, may ask her for advice.

Terms & Conditions

- * Students will not be accepted into the class until the registration fee has been paid.
- * Fees are due immediately and payable on registration. Registration without full payment is considered unsuccessful.
- * All fees are non-refundable and no credit offered for withdrawals once students are accepted into the class.
- * We reserve the right to change venue & time without prior notice.
- * Lessons will finish on time. Please pick up your child promptly.
- * No refunds or make up classes will be provided should lessons be canceled because of inclement weather, school closures or other Department of Education / Government directives.
- * No refunds or make up classes are offered should students be unable to attend a scheduled class for any reason.